



Web of Science 最新情報のご紹介

トムソン・ロイター
学術情報ソリューション

宮田 亮

2013年7月10日 (水)
NIMS LIBRARY OPEN SEMINAR
Web of Science活用ワークショップ



Web of Scienceの基本

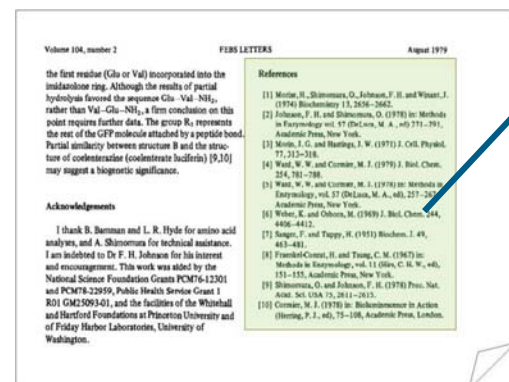
- Web of Knowledgeに搭載されている12種類の文献データベースのひとつで、Web of Knowledgeの基幹コンテンツです
- 幅広い分野をカバーしています

引用データベース	<input checked="" type="checkbox"/> Science Citation Index Expanded (SCI-EXPANDED) --1900-現在
論文	<input checked="" type="checkbox"/> Social Sciences Citation Index (SSCI) --1900-現在
	<input checked="" type="checkbox"/> Arts & Humanities Citation Index (A&HCI) --1975-現在
	<input checked="" type="checkbox"/> Conference Proceedings Citation Index- Science (CPCI-S) --1990-現在
会議録	<input checked="" type="checkbox"/> Conference Proceedings Citation Index- Social Science & Humanities (CPCI-SSH) --1990-現在
	<input checked="" type="checkbox"/> Book Citation Index- Science (BKCI-S) --2005-現在
専門書	<input checked="" type="checkbox"/> Book Citation Index- Social Sciences & Humanities (BKCI-SSH) --2005-現在
	化学データベース
化合物情報	<input checked="" type="checkbox"/> Index Chemicus (IC) --1993-現在



Web of Scienceの特徴

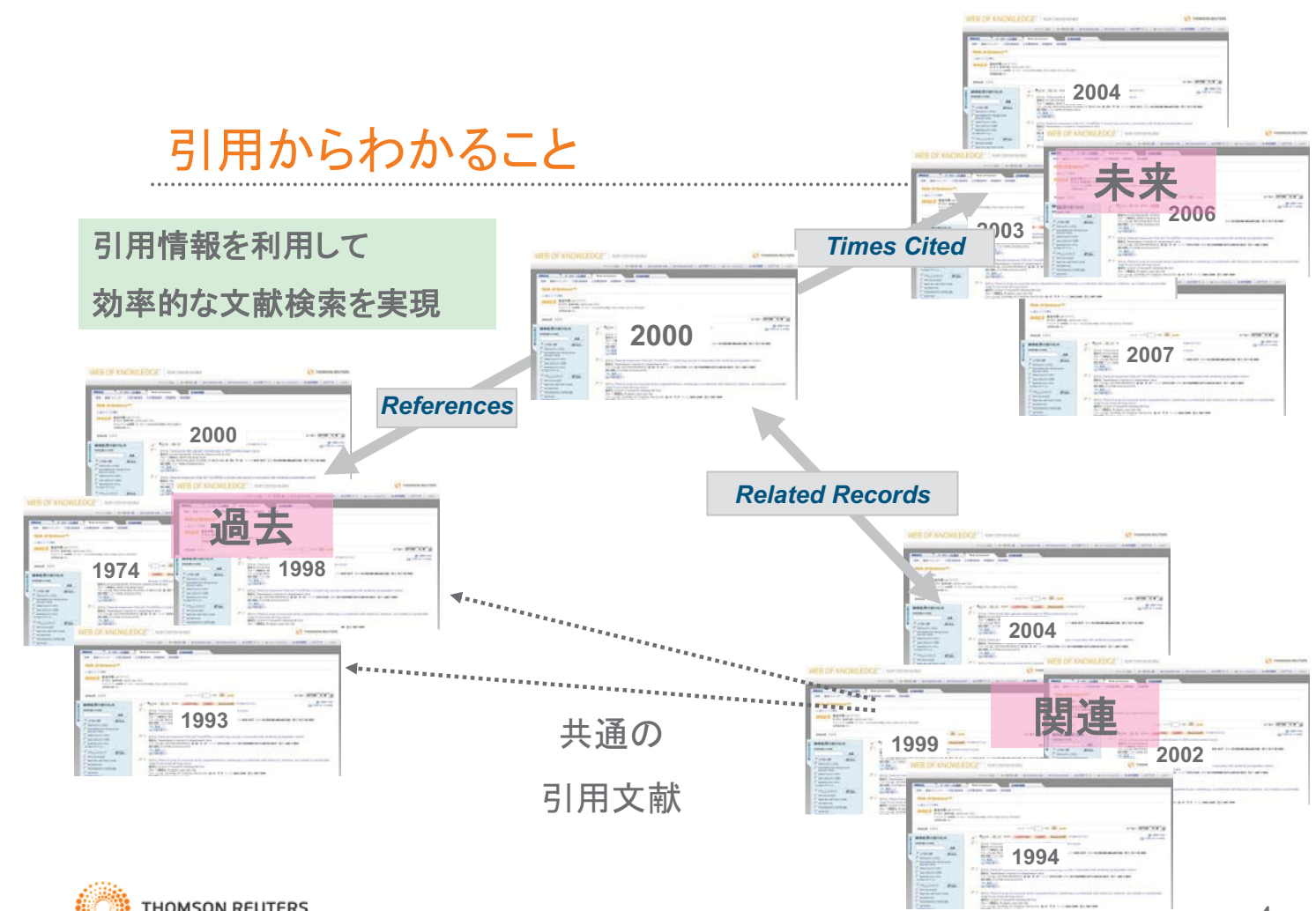
- 各分野をリードする国際誌（コア・ジャーナル）を集めています
- 各文献を引用関係でリンクし、ある文献が何に引用されているか、何を引用しているかがわかります。
- インパクトファクターのソースデータです。



各論文の引用文献情報を全てデータとして蓄積



引用からわかること



Web of Scienceのレコード例

Web of Science® now with books

<< 検索結果リストに戻る | レコード 1 / 55,800 | Web of Science®からのレコード

全文 (0) | 保存先: ENDNOTE® WEB | ENDNOTE® | 自著の出版物 | その他のオプション

被引用数: 4,959 (Web of Scienceから)

引用文献: 50 [Related Recordsを探索] | 引用マップ

抄録: Differentiated cells can be reprogrammed to an embryonic-like state by transfer of nuclear contents into oocytes or by fusion with embryonic stem (ES) cells. Little is known about factors that induce this reprogramming. Here, we demonstrate induction of pluripotent stem cells from mouse embryonic or adult fibroblasts by introducing four factors, Oct3/4, Sox2, c-Myc, and Klf4, under ES cell culture conditions. Unexpectedly, Nanog was dispensable. These cells, which we designated **iPS** (induced pluripotent stem) cells, exhibit the morphology and growth properties of ES cells and express ES cell marker genes. Subcutaneous transplantation of **iPS** cells into nude mice resulted in tumors containing a variety of tissues from all three germ layers. Following injection into blastocysts, **iPS** cells contributed to mouse embryonic development. These data demonstrate that pluripotent stem cells can be directly generated from fibroblast cultures by the addition of only a few defined factors.

著者名: Takahashi, K (Takahashi, Kazutoshi); Yamanaka, S (Yamanaka, Shinya)
 出版物名: CELL 巻: 126 号: 4 ページ: 663-676 DOI: 10.1016/j.cell.2006.07.024 発行: AUG 25 2006
 アクセッション番号: WOS:000240276700016
 ドキュメントタイプ: Article

被引用数: 5,416
 引用アラートの作成
 この記事は Web of Knowledge で 5,416 回引用されています。

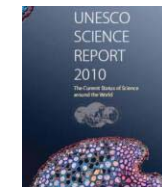
Liao, Bing. Itch, an E3 ligase of Oct4, is required for embryonic stem cell self-renewal and pluripotency induction. JOURNAL OF CELLULAR PHYSIOLOGY, JUL 2013.

Jiang, Bo. Differentiation of Reprogrammed Mouse Cardiac Fibroblasts into Functional Cardiomyocytes. CELL BIOCHEMISTRY AND BIOPHYSICS, JUN 2013.

Wang, Yong. Transcription factor Sox11 is essential for both embryonic and adult neurogenesis. DEVELOPMENTAL CELL, JUN 2013.

Web of Scienceの活用

- 研究者や学生の先行研究のための文献調査として
- 評価・分析用の統計データとして
 - Times Higher Education World University Rankings
 - CWTS Leiden Ranking
 - 研究論文に着目した日本の大学ベンチマーキング2011
 - 科学研究費助成事業データベース (KAKEN) と論文データベース (Web of Science) の連結によるデータ分析
 - 科学技術指標 - 科学技術白書
 - 米国国立科学財団: NSF: Science and Engineering Indicators など



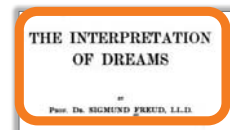
RESEARCH OUTPUTS



NEW CONTENT: BOOK CITATION INDEX

Scholarly Books

As for documented influence of these works, this is clearly presented in a resource such as Web of Science.



Cited by over 3,000 journal articles, the English version alone.



Cited Reference Search (Find the articles that cite a person's work)

Step 1: Enter information about the cited work. Fields are combined with

* Note: Entering the volume, issue, or page in combination with other fields may red

Search results for 'freud*' showing a table with columns for author, title, and citation count.

Example: O'Brian C*	FREUD S	INTERPRETATION DREAM	968
interpret* dream*	FREUD S	INTERPRETATION DREAM	107

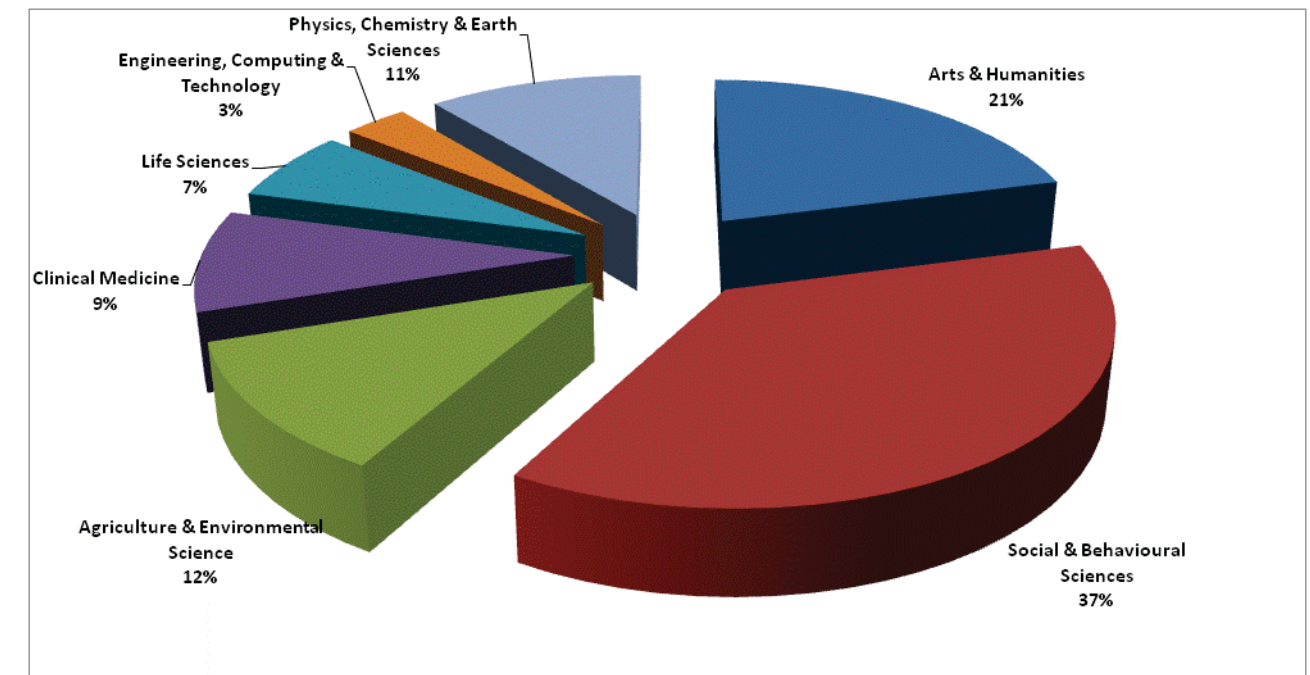
Example: J. Comp* A

Search results for 'Sleep disorders in psychiatry' showing a table with columns for title, author, source, and citation count.

Title: Sleep disorders in psychiatry	Author(s): Silva Jorge Alberto Costa e	Source: METABOLISM-CLINICAL AND EXPERIMENTAL Volume 55 Issue: 10 Supplement 2 Pages: 540-544 DOI: 10.1016/j.metabol.2006.07.012 Published: OCT 2006	Times Cited: 14 (from Web of Science)
Title: Pragmatism, Bourdieu, and collective emotions in contentious politics	Author(s): Emirbayer M, Goldberg CA	Source: THEORY AND SOCIETY Volume 34 Issue: 5-6 Pages: 469-518 DOI: 10.1007/s11186-005-1619-x Published: DEC 2005	Times Cited: 13 (from Web of Science)
Title: SLEEP - OPINION Sleep viewed as a state of adaptive inactivity	Author(s): Siegel Jerome M	Source: NATURE REVIEWS NEUROSCIENCE Volume 10 Issue: 10 Pages: 747-753 DOI: 10.1038/nrn2697 Published: OCT 2009	Times Cited: 12 (from Web of Science)
Title: Theories of embodied knowledge: New directions for cultural and cognitive sociology?	Author(s): Ignatow Gabriel	Source: JOURNAL FOR THE THEORY OF SOCIAL BEHAVIOUR Volume 37 Issue: 2 Pages: 115-124 DOI: 10.1111/j.1468-5914.2007.00328.x Published: JUN 2007	Times Cited: 12 (from Web of Science)



Editorial Profile of the Book Citation Index 50,000 books



10

BOOK CITATION INDEX IN WEB OF SCIENCE

THE TARGETS OF SOCIAL MOVEMENTS: BEYOND A FOCUS ON THE STATE

Author(s): Van Dyke, N (Van Dyke, Nella); Soule, SA (Soule, Sarah A.); Taylor, VA (Taylor, Verta A.)²

Editor(s): Myers, DJ; Cress, DM

Source: **AUTHORITY IN CONTENTION** Book Series: Research in Social Movements Conflicts and Change Series Volume: 25 Pages: 27-54 DOI: 10.1016/S0163-786X(04)25002-9 Published: 2004

Times Cited: 35 (from Web of Science)

Cited References: 106 [view related records] [Citation Map]

Abstract: Among students of social movements, the prevailing view is that, in Western democracies, most social movements target the state and its institutions. Recently scholars have questioned this definition of social movements, associated with the political process and contentious politics approaches, arguing that public protest is also used to shape public opinion, identities, and cultural practices and to pressure authorities in institutional arenas not directly linked to the state. In this paper, we take up this debate by examining the targets of recent social movements. Our analysis draws from data on 4,654 protest events that occurred in the United States between 1968 and 1975. The protest events in our dataset encompass a variety of tactics used by social movements organized around a number of different issues. We find that, although virtually all movements in the United States direct some public protest at the state, there is considerable variation in the targets of modern movements. During this period, environmental, peace, international human rights, single-policy, and ethnic movements targeted the state, while the civil rights, gay and lesbian, and the women's movement were non-state institutions. Our analysis calls into question excessively state-centered conceptions of social movements and activity as directed primarily at the formal political domain of social life.

Accession Number: WOS:000271111500003

Document Type: Article, Book Chapter

Language: English

KeyWords Plus: LOCAL NEWSPAPER COVERAGE; CIVIL-RIGHTS-MOVEMENT; INSTITUTIONAL MOVEMENT; PROTEST; IDENTITY; MISSISSIPPI; POLICY

Reprint Address: Van Dyke, N (reprint author), Washington State Univ, Dept Sociol, Pullman, WA 99164 USA

Addresses:

1. Univ Arizona, Tucson, AZ 85721 USA

2. Univ Calif Santa Barbara, Santa Barbara, CA 93106 USA

Publisher: EMERALD GROUP PUBLISHING LIMITED, HOWARD HOUSE, WAGON LANE, BINGLEY, W YORKSHIRE BD16 1WA, ENGLAND

Web of Science Category: Sociology

Times Cited: 35

Create Citation Alert

This article has been cited 35 times in Web of Knowledge.

Jaffee, Daniel. Weak Coffee: Certification and Co-Optation in the Fair Trade Movement. SOCIAL PROBLEMS, FEB 2012.

Swank, Eric. Resources, Social Networks, and Collective Action Frames of College Students Who Join the Gay and Lesbian Rights Movement. JOURNAL OF HOMOSEXUALITY, 2012.

Bartley, Tim. Movements, Markets and Fields: The Effects of Anti-Sweatshop Campaigns on U.S. Firms, 1993-2000.

This record is for a Book Chapter, from a multi-authored Book in Series.

Both the Authors of this Chapter and the Volume (Source) Editors are presented.

Cited References: 106

View the bibliography of this record (from Web of Science®).

[Citation Map]

Additional information



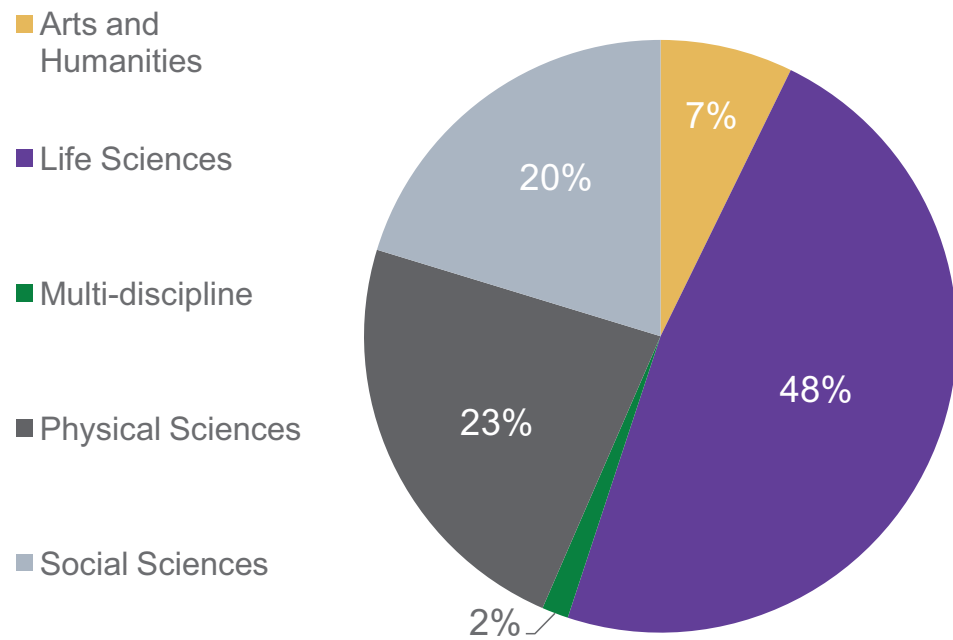
Data Citation Index



12

DISCIPLINE COVERAGE BREAKDOWN

Repositories by Discipline



THE REPOSITORIES AT LAUNCH

Some Key Examples...

Life Sciences	Physical Sciences	Social Sciences and Arts & Humanities
<ul style="list-style-type: none"> nmrshiftdb2 (Germany) Gene Expression Omnibus (USA) UniProt Knowledgebase (USA) ArrayExpress Archive (UK) Compendium of Protein (China) Lysine Acetylation (USA) Protein Data Bank (USA) EMAGE gene expression database (UK) 	<ul style="list-style-type: none"> Pangaea (Germany) U.S. National Oceanogr Data Center Australian Antarctic Data Centre Crystallography Open Database (Lithuania) NOAA Paleoclimatol (USA) British Geological Survey British Oceanographic Data Centre 	<ul style="list-style-type: none"> Eurostat (Europe) ICPSR - Inter University Consortium for Political and Social Research (USA) Roper Center (USA) Australian Data Archive IQSS – The Institute for Quantitative Social Science Odum Archive (USA) Association of Religion Data Archives Michigan Corpus of Academic Spoken English



Annotations:

- Abstract:** A significant proportion of acute myocardial infarction (MI) patients develop heart failure (HF). Early identification of patients at risk of developing HF after MI would be a major breakthrough. An approach combining the power of biological information network and the precision of microarray analysis was undertaken to identify biomarkers of HF. A set of three new biomarkers of HF was identified and provided significantly improved prediction accuracy than microarray or network analysis alone. These three biomarkers, Vascular Endothelial Growth Factor B, thrombospondin-1 and placental growth factor are all related to angiogenesis, a natural process that allows the revascularization of the heart after MI and prevents the occurrence of HF. Therefore, combined network and microarray analysis allows a systematic and less biased approach to biomarker discovery.
- Document Type:** Data study
- Data Type:** Expression profiling by array
- Accession Number:** DRCI:DATA2012007000265211
- Language:** English
- Addresses:** 1. CRP-Sante, Laboratory of Cardiovascular Research, 120 route d'Arlon, Luxembourg, Luxembourg; 2. IPM/CINRS, 860 route des Lucioles, Valbonne - Sophia-Antipolis, 06560, France
- E-mail Address:** yvan.devaux@crp-sante.lu
- Web of Science Category:** Biochemistry & Molecular Biology; Genetics & Heredity
- Subject Area:** Biochemistry & Molecular Biology; Genetics & Heredity
- Taxonomic Data:**

SUPER TAXA	TAXA NOTES
Animalia, Chordata, Vertebrata, Mammalia, Primates	Animals, Chordates, Humans, Mammals, Primates, Vertebrates
- Miscellaneous:** microarray analysis; ischemia; Heart Disease; heart failure; revascularization; biomarker; Vascular endothelial growth factor; Placenta; bioinformatics; Cardiovascular System
- Associated Records:**

Record ID	Data set	Link to External
GSM302316: DA 706	Data set	Link to External
GSM302336: L52 GH	Data set	Link to External
GSM302327: NA 735	Data set	Link to External
GSM302312: KF 692	Data set	Link to External

Recommendation: Thomson Reuters recommends citing this resource as: Devaux, Yvan; Lebrigand, Kevin; Le Brigand, Kevin; Barbry, Pascal (2010): GSE11947: Integrated Network and Microarray Analysis to Identify New Biomarkers in Ischemic Heart Disease. Gene Expression Omnibus. <http://www.ncbi.nlm.nih.gov/geo/query/acc.cgi?acc=GSE11947>

Impact: Through recommendation of a standard format for citing research data we hope to impact the research community's citing practices – facilitating capture and unification of cites to research data going forward.



Annotations:

- Abstract:** A significant proportion of patients develop left ventricular (LV) dysfunction and heart failure (HF) after acute myocardial infarction (MI). Existing biomarkers of HF provide limited information after MI. To identify new prognostic biomarkers in MI patients, we designed an approach combining protein interaction networks and microarray analysis of blood cells. Blood samples for RNA and protein analysis were taken from 127 acute MI patients. Echocardiography was performed at one month. Assuming that angiogenesis is related to cardiac repair after MI, a protein-protein interaction network of angiogenesis was constructed and analyzed. Among the 556 proteins and 686 interactions of this network, a cluster of 53 proteins highly specialized in regulation of cell growth was identified. Of these 53 proteins, 38 were found differentially expressed by microarrays between low (a parts per thousand currency signEuro parts per thousand 40%)
- Times Cited:** 9 (from Web of Science)
- Cited References:** 35 [view related records] Citation Map
- Abstract:** A significant proportion of patients develop left ventricular (LV) dysfunction and heart failure (HF) after acute myocardial infarction (MI). Existing biomarkers of HF provide limited information after MI. To identify new prognostic biomarkers in MI patients, we designed an approach combining protein interaction networks and microarray analysis of blood cells. Blood samples for RNA and protein analysis were taken from 127 acute MI patients. Echocardiography was performed at one month. Assuming that angiogenesis is related to cardiac repair after MI, a protein-protein interaction network of angiogenesis was constructed and analyzed. Among the 556 proteins and 686 interactions of this network, a cluster of 53 proteins highly specialized in regulation of cell growth was identified. Of these 53 proteins, 38 were found differentially expressed by microarrays between low (a parts per thousand currency signEuro parts per thousand 40%)
- Miscellaneous:** microarray analysis; ischemia; Heart Disease; heart failure; revascularization; biomarker; Vascular endothelial growth factor; Placenta; bioinformatics; Cardiovascular System
- Associated Records:**

Record ID	Data set	Link to External
GSM302316: DA 706	Data set	Link to External
GSM302336: L52 GH	Data set	Link to External
GSM302327: NA 735	Data set	Link to External
GSM302312: KF 692	Data set	Link to External

Impact: The full record serves as a central point from which to collect information around this data study, and link to related information – such as the articles that have referenced this Data Study.



Search Cited Reference Search Advanced Search Search History

Data Citation IndexSM

<< Back to results list Record 5 of 21 >>

Save to: ENDNOTE[®] WEB ENDNOTE[®] RefWorks I Wrote These Publications more options

GSE11947: Integrated Network and Microarray Analysis to Identify New Biomarkers in Ischemic Heart Disease.

From Repository: Gene Expression Omnibus.

Author(s): Devaux, Yvan; Lebrigand, Kevin; Le Brigand, Kevin; Barbry, Pascal

Source: Gene Expression Omnibus. Source URL: <http://www.ncbi.nlm.nih.gov/geo/query/acc.cgi?acc=GSE11947> (Viewed Date: 12 Dec 2011) Published Year: 2010

Cited References: 0

Abstract: A significant proportion of acute myocardial infarction (MI) patients develop heart failure (HF). Early identification of patients at risk of developing HF after MI would be a major breakthrough. An approach combining the power of biological information networks and the precision of microarray analysis was undertaken to identify biomarkers of HF. A set of three new biomarkers of HF was identified and p...

and microarray analysis to identify potential biomarkers after myocardial infarction. FUNCTIONAL & INTEGRATIVE GENOMICS, AUG 2010.

Azuaje, Francisco. Coordinated modular functionality and prognostic potential of a heart failure biomarker-driven interaction network. BMC SYSTEMS BIOLOGY, 12 2010.

Azuaje, Francisco. Integrative Pathway-logic Modeling of Ventricular Function after Myocardial Infarction. PLOS ONE, MAR 11 2010.

View all 3 citing articles]

Cited References: 0

Additional information

Additional Resources

NCBI GEO > Accession Display

Not logged in | Login

GEO help: Mouse over screen elements for information.

Scope: Self Format: HTML Amount: Quick GEO accession: GSE11947 GO

Series GSE11947 Query DataSet

Platforms (1) GPL1947 RNG-MRC_HU25k_STRASBOURG

Samples (32) GSM302309 L88 TG GSM302310 L67 SR GSM302311 L38 DP

Relations BioProject: 105803

Analyze with GEO2R

Download family	Format
SOFT formatted family file(s)	SOFT
MINIML formatted family file(s)	MINIML
Series Matrix File(s)	TXT

Supplementary file	Size	Download	File type/resource
GSE11947_RAW.tar	222.2 Mb	(ftp)(http)(custom)	TAR (of GPR)

Raw data provided as supplementary file
Processed data included within Sample table

Above all though – the Data Citation Index is about getting users to research data itself.

Link to the Data Set information within the repository.

Search Cited Reference Search Advanced Search Search History

Data Citation IndexSM

<< Back to results list Record 5 of 21 >>

Save to: ENDNOTE[®] WEB ENDNOTE[®] RefWorks I Wrote These Publications more options

GSE11947: Integrated Network and Microarray Analysis to Identify New Biomarkers in Ischemic Heart Disease.

From Repository: Gene Expression Omnibus.

Author(s): Devaux, Yvan; Lebrigand, Kevin; Le Brigand, Kevin; Barbry, Pascal

Associated Records

Title: GSE11947: Integrated Network and Microarray Analysis to Identify New Biomarkers in Ischemic Heart Disease.

Author(s): Devaux, Yvan ; Lebrigand, Kevin ; Le Brigand, Kevin ; et al.

Source: Gene Expression Omnibus

Source URL: <http://www.ncbi.nlm.nih.gov/geo/query/acc.cgi?acc=GSE11947>

Document Type: Data study

Results: 32 Page 1 of 4 Go Sort by: Year Published – newest to oldest

Refine Results

Search within results for

Web of Science Categories

BIOCHEMISTRY MOLECULAR BIOLOGY (32)

GENETICS HEREDITY (32)

Subject Areas

BIOCHEMISTRY MOLECULAR BIOLOGY (32)

GENETICS HEREDITY (32)

Document Types

DATA SET (32)

Authors

Group Authors

Editors

Sample GSM302316

Status: Public on May 25, 2010

Title: DA 706

Sample type: RNA

Channel 1

Source name: Ref

Organism: Homo sapiens

Characteristics: Labeling_reference: Ref Extraction_reference: Trizol Sample_reference: R4f Subject_reference: R4f Tissue: blood Extraction_amount: 10.0

Channel 2

Source name: DA 706

Organism: Homo sapiens

Characteristics: Labeling_reference: DA 706 Extraction_reference: PAXgene Sample_reference: DA 706 Subject_reference: DA 706 Tissue: Blood Extraction_amount: 10.0

Extracted molecule: total RNA

Extraction protocol: Trizol

Label: Cy3, Cy5

Label protocol: Ambion

Miscellaneous: microarray analysis; ischemia; Heart Disease; heart failure; biomarker; Vascular endothelial growth factor; Placenta; bioinformatics; Card

Associated Records: [View All]

GSM302316: DA 706	Data set	Link to External Source
GSM302336: L52 GH	Data set	Link to External Source
GSM302327: NA 735	Data set	Link to External Source
GSM302312: KF 692	Data set	Link to External Source

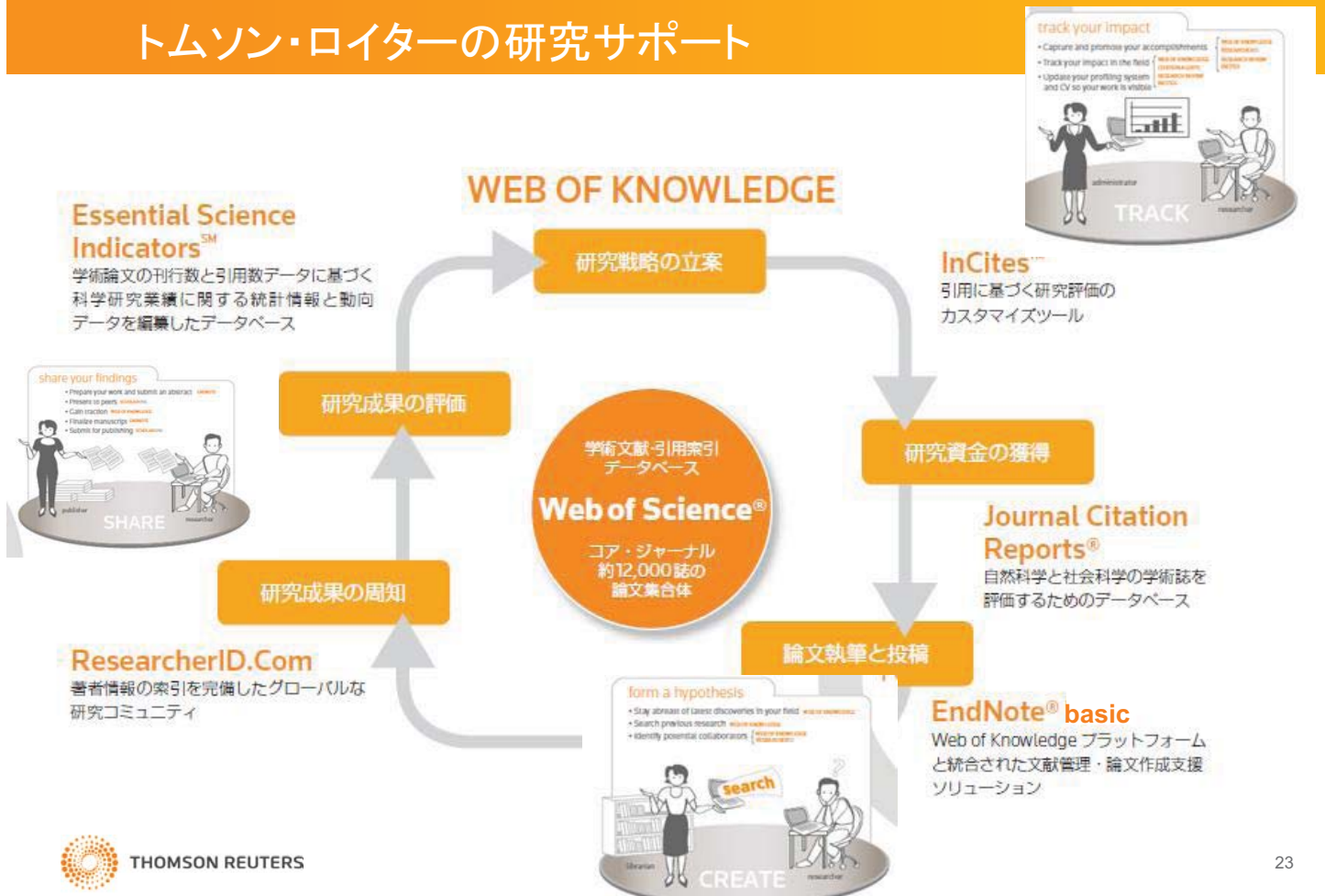
THOMSON REUTERS

Above all though – the Data Citation Index is about getting users to research data itself.

Link to the Data Set information within the repository.

Remaining within the Data Citation Index, link to all records associated with this data study -- or link out directly to associated data sets.

トムソン・ロイターの研究サポート



Thank you!